

THE HOME OF RECOVERY, GOLDER'S GREEN.

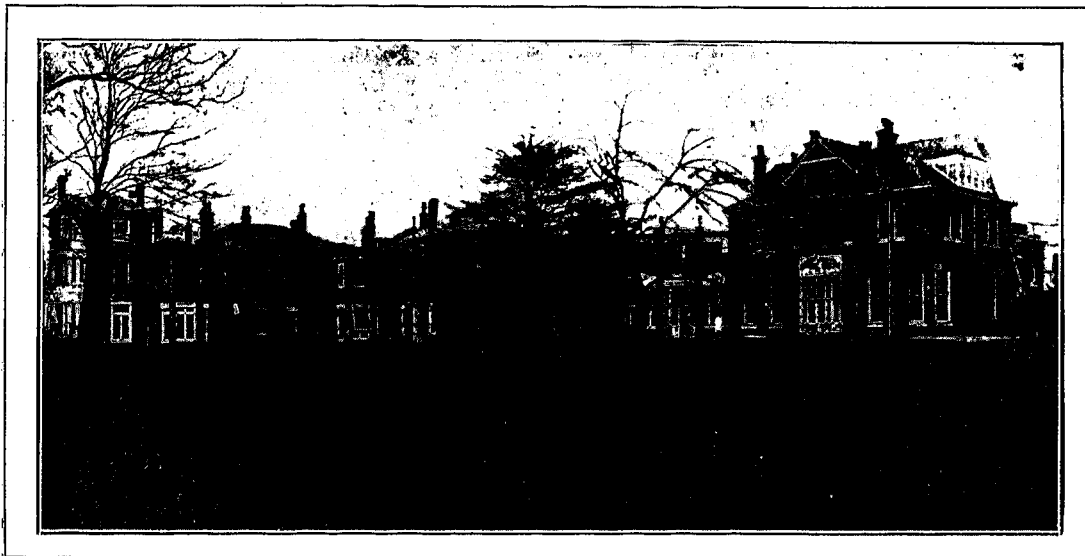
FOR THE CURE OF NEURASTHENIA.

Of the many distressing conditions arising from service at the Front, there are none in more urgent need of amelioration than those resulting in shattered nerves. It is to effect this that the beautiful property known as "Highfield," Golder's Green, has been opened as a Home of Recovery, where from the entrance of the fine old house, to the extreme limit of its charming and extensive grounds, the whole atmosphere is charged with a sense of restfulness. The whole colour scheme of the decoration has been thought out with this end in view. The patients are civilian, which means that they have finally been discharged from the Army. And

has been generously provided by the Joint War Committee of the British Red Cross and Order of St. John, while the cost of maintenance will be defrayed by the Pensions Ministry in accordance with the terms of the new Warrant. It is under the management of the Maida Vale Hospital for Nervous Diseases, the Honorary Medical Staff of which are the Physicians.

To quote from the official paper: "Generous terms have been granted by the Ministry of Pensions, so that all who enter the Home may know that their wives and families are amply provided for in their absence.

"The wife or dependent will be paid a weekly family allowance sufficient to maintain them, independently of any assistance from the patient, whilst he is in the Home. Allowances for children will also be made.



THE HOME OF RECOVERY, GOLDER'S GREEN.

under no circumstances can they be re-enlisted.

This at once clears the air of military officialism and it can be readily understood that in these particular cases, the relief from all circumstances reminding them of the cause of their illness, plays no small part in their cure.

Many of the patients in the Home have been in their own homes for some long time, but when the arrangements are in full swing it is proposed that they shall come direct from the various hospitals, which obviously will be more satisfactory. If they are found to be benefiting from the treatment, no limit is put to their stay.

The Home has been provided in accordance with arrangements made with the Institutional Committee of the Pensions Ministry, the Joint War Committee of the British Red Cross Society and Order of St. John, the War Office and the Statutory Committee. The capital expenditure

"To those who desire to enter the Home the following amounts, therefore, will be assured:—

"*Single Men*, 27s. 6d. per week. An allowance will be made for dependents.

"*Married Men*, 27s. 6d. per week, 13s. 9d. for wife, 5s. for first child, 4s. 2d. for second child, 3s. 4d. for third child, 2s. 6d. each for the other children.

"A deduction of 1/- per day will be made from the man's allowance for his board, but treatment will be provided free. As his personal expenses will be trifling, it should be possible for him to send a substantial additional weekly allotment to his wife and family."

It may be imagined that to find accommodation for 100 patients and staff would be a difficult matter in any building not built for an institution. "Highfield," which was formerly a girls' boarding school, is able to provide room for this large party, while preserving the appearance and homeliness

[previous page](#)

[next page](#)